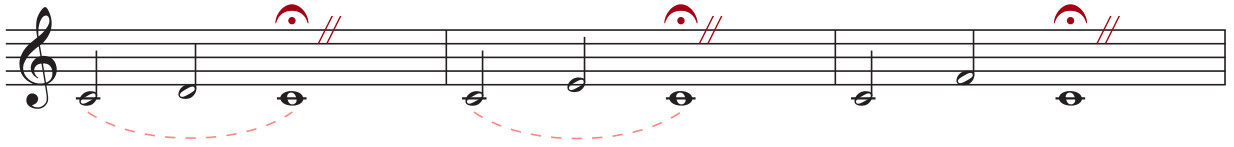
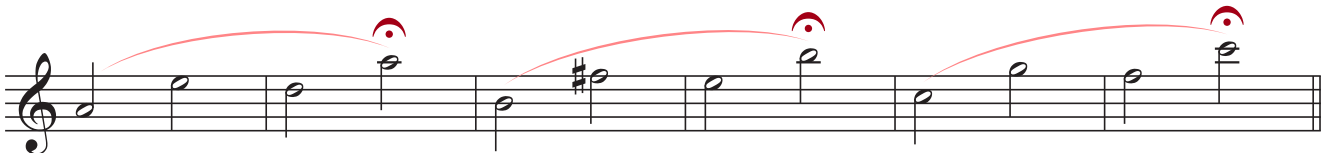
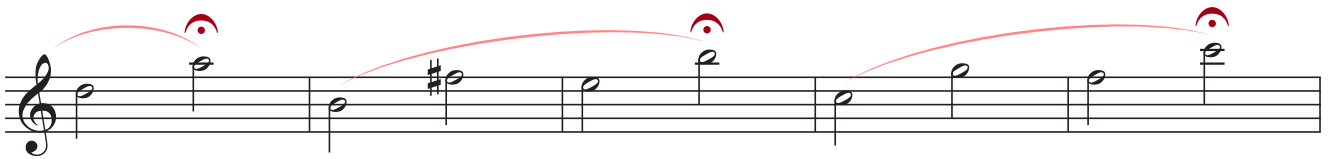
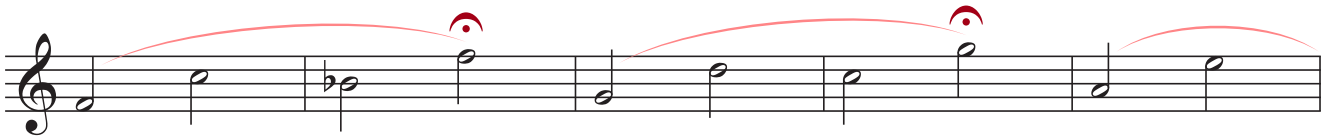


Einspielübungen

langsam ♩ = 60



Einspielübungen



Einspielübungen

Chromatische Einspielübung

First system: Treble clef, 4/4 time. Notes: G4, F#4, E4, D4, C4. Dynamics: *p* (under G), *f* (under F#), *pp* (under E), *simile* (under D and C). A red slur covers the first four notes, and a red circle with a dot is above the E note.

Second system: Treble clef. Notes: B3, A3, G3, F3, E3. Dynamics: *pp* (under B), *f* (under A), *pp* (under G), *simile* (under F and E).

Third system: Treble clef. Notes: D3, C3, B2, A2, G2. Dynamics: *pp* (under D), *f* (under C), *pp* (under B), *simile* (under A and G).

Fourth system: Treble clef. Notes: F2, E2, D2, C2, B1. Dynamics: *pp* (under F), *f* (under E), *pp* (under D), *simile* (under C and B).

Fifth system: Treble clef. Notes: A1, G1, F1, E1, D1. Dynamics: *pp* (under A), *f* (under G), *pp* (under F), *simile* (under E and D).

Chromatische Einspielübung

First system: Treble clef, 4/4 time. Notes: G4, F#4, E4, D4, C4. Dynamics: *p* (under G), *f* (under F#), *pp* (under E), *simile* (under D and C). A red slur covers the first four notes, and a red circle with a dot is above the E note.

Second system: Treble clef. Notes: B3, A3, G3, F3, E3. Dynamics: *pp* (under B), *f* (under A), *pp* (under G), *simile* (under F and E).

Third system: Treble clef. Notes: D3, C3, B2, A2, G2. Dynamics: *pp* (under D), *f* (under C), *pp* (under B), *simile* (under A and G).

Fourth system: Treble clef. Notes: F2, E2, D2, C2, B1. Dynamics: *pp* (under F), *f* (under E), *pp* (under D), *simile* (under C and B).

Fifth system: Treble clef. Notes: A1, G1, F1, E1, D1. Dynamics: *pp* (under A), *f* (under G), *pp* (under F), *simile* (under E and D).