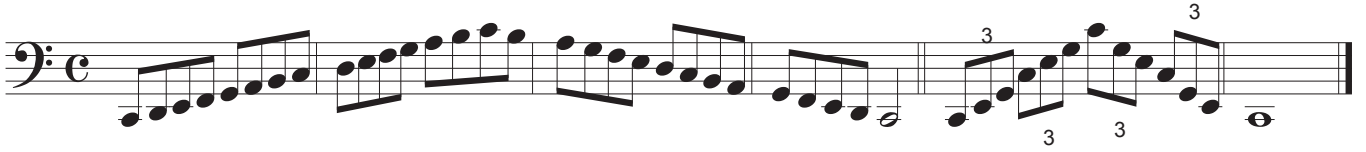


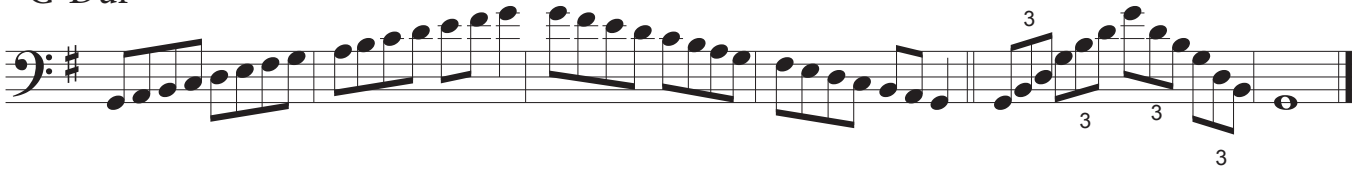
# Dur- und Molltonleitern

Fagott

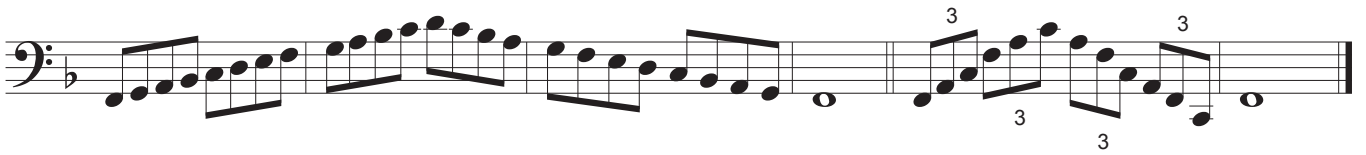
C-Dur



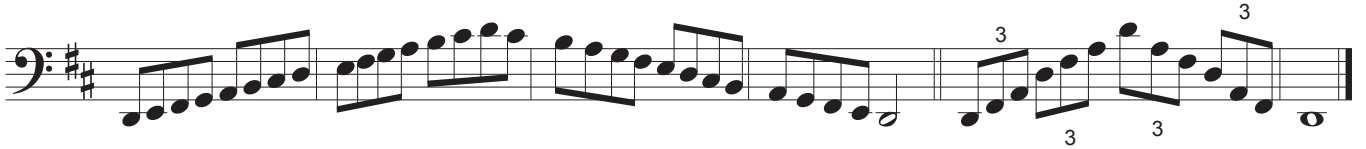
G-Dur



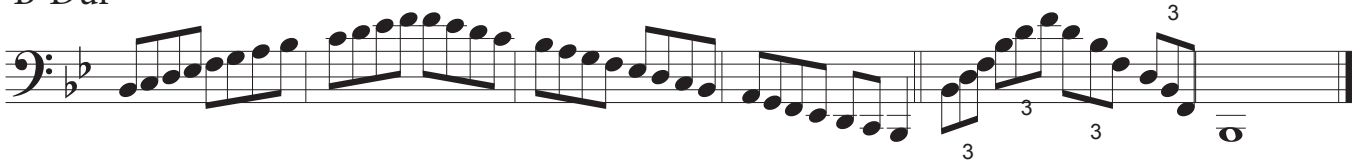
F-Dur



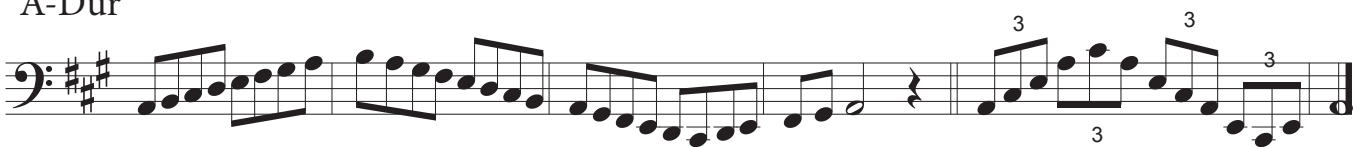
D-Dur



B-Dur



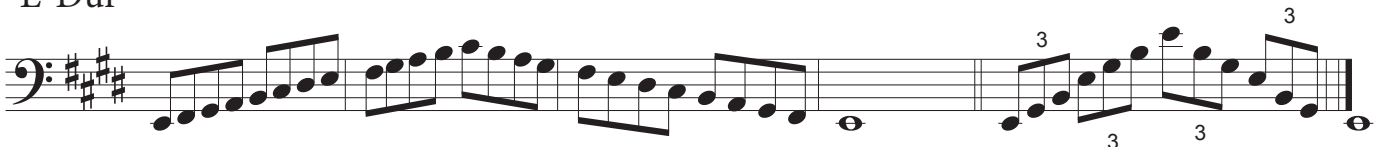
A-Dur



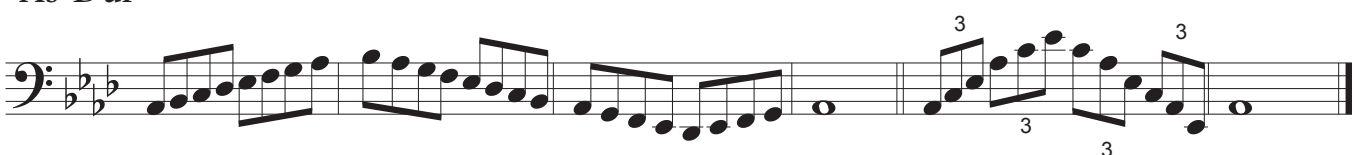
Es-Dur



E-Dur



As-Dur



# ÜP 1 Saxophon

a-Moll

Two staves of musical notation for the a-Moll exercise. The first staff contains a sequence of eighth and sixteenth notes. The second staff continues the sequence and includes three triplet markings (indicated by a '3' above the notes) in the final measure.

e-moll

Two staves of musical notation for the e-moll exercise. The first staff contains a sequence of eighth and sixteenth notes. The second staff continues the sequence and includes three triplet markings (indicated by a '3' above the notes) in the final measure.

d-moll

Two staves of musical notation for the d-moll exercise. The first staff contains a sequence of eighth and sixteenth notes. The second staff continues the sequence and includes three triplet markings (indicated by a '3' above the notes) in the final measure.

h-moll

Two staves of musical notation for the h-moll exercise. The first staff contains a sequence of eighth and sixteenth notes. The second staff continues the sequence and includes three triplet markings (indicated by a '3' above the notes) in the final measure.

g-moll

Two staves of musical notation for the g-moll exercise. The first staff contains a sequence of eighth and sixteenth notes. The second staff continues the sequence and includes three triplet markings (indicated by a '3' above the notes) in the final measure.