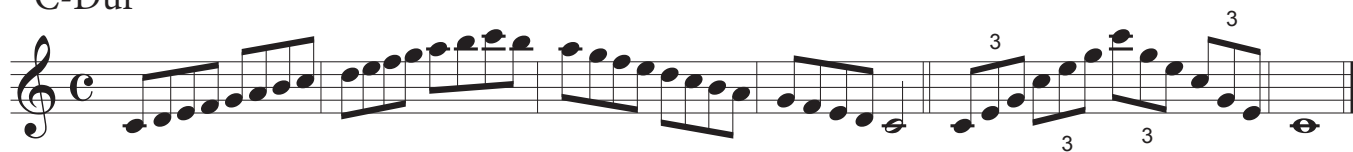


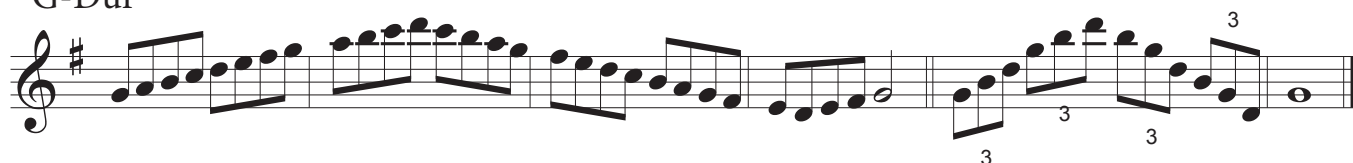
Dur- und Molltonleitern

SAXOPHON

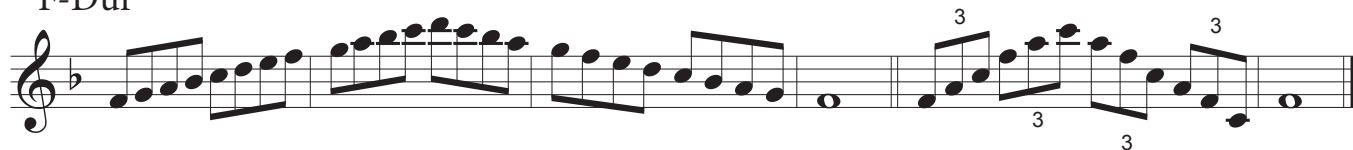
C-Dur



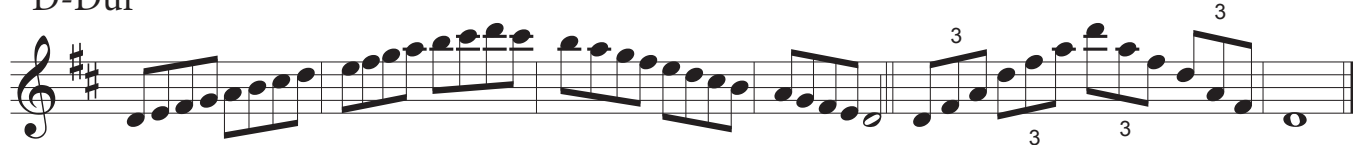
G-Dur



F-Dur



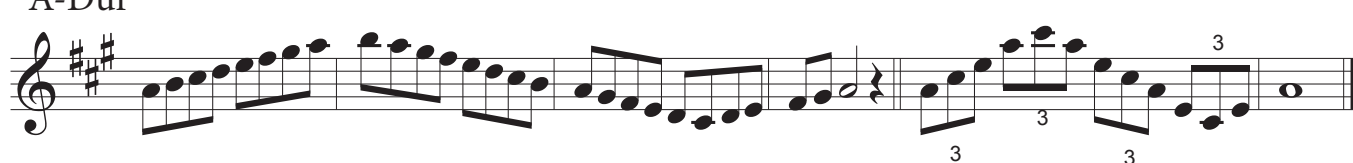
D-Dur



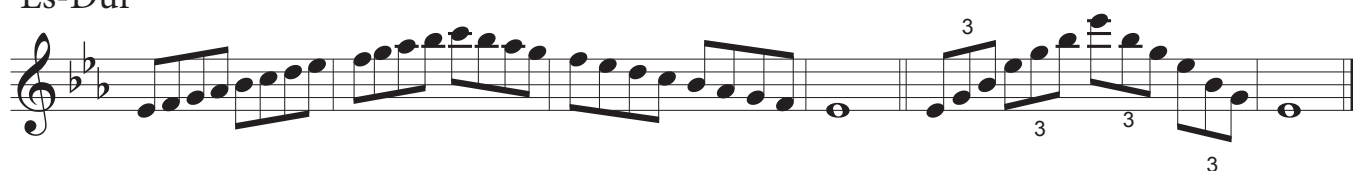
B-Dur



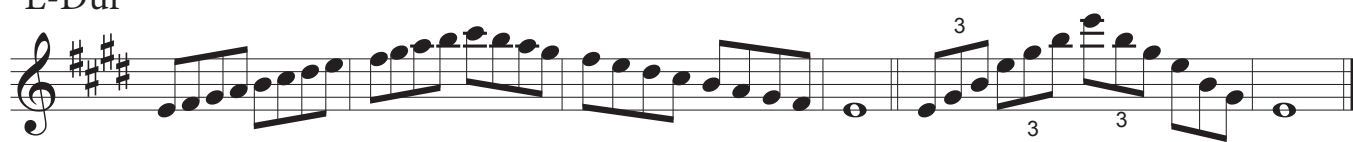
A-Dur



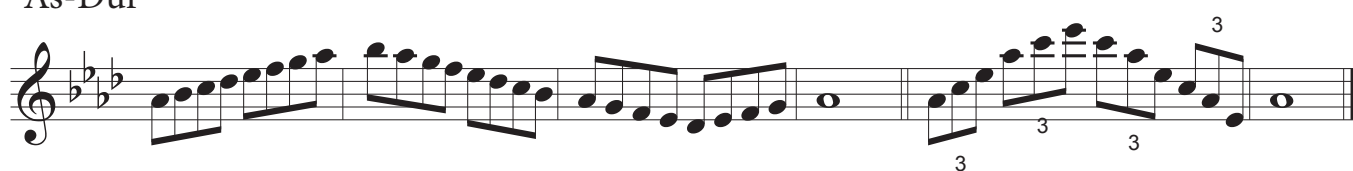
Es-Dur



E-Dur

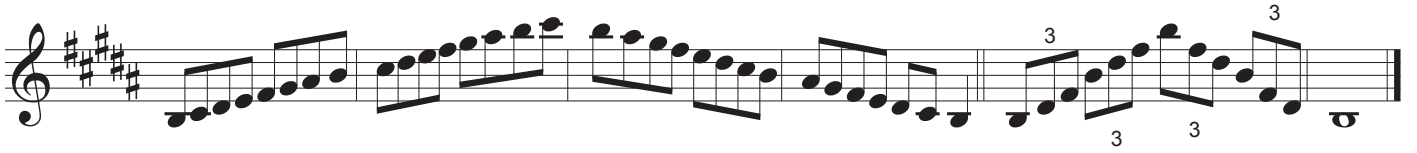


As-Dur

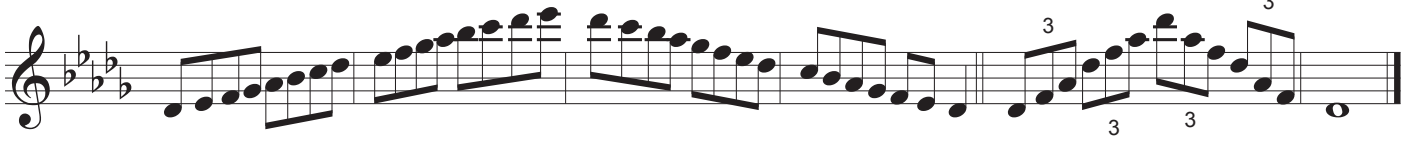


Saxophon

H-Dur



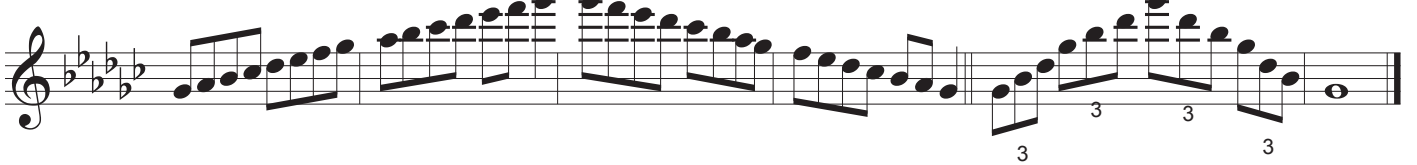
Des-Dur



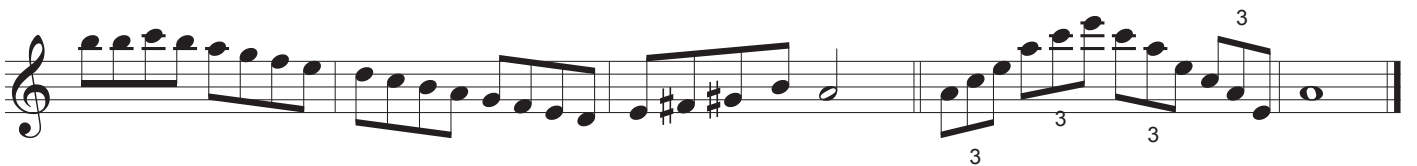
Fis-Dur



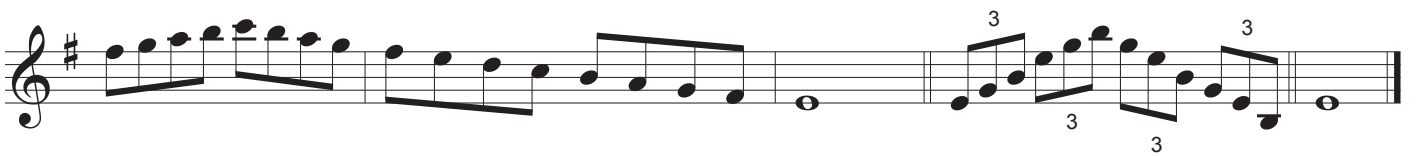
Ges-Dur



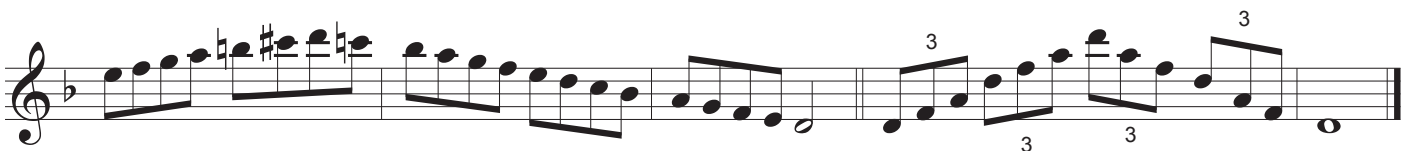
a-Moll



e-moll



d-moll



Saxophon

h-moll

h-moll

g-moll

g-moll

fis-moll

fis-moll

c-moll

c-moll

cis-moll

cis-moll

Saxophon

f-moll

Two staves of musical notation for the f-moll key signature. The first staff contains a continuous melodic line with eighth and sixteenth notes. The second staff continues the melody and includes three triplet markings, each consisting of three eighth notes.

gis-moll

Two staves of musical notation for the gis-moll key signature. The first staff contains a melodic line with some notes marked with an asterisk (*). The second staff continues the melody and includes three triplet markings, each consisting of three eighth notes.

b-moll

Two staves of musical notation for the b-moll key signature. The first staff contains a melodic line. The second staff continues the melody and includes three triplet markings, each consisting of three eighth notes.

dis-moll

Two staves of musical notation for the dis-moll key signature. The first staff contains a melodic line with some notes marked with an asterisk (*). The second staff continues the melody and includes three triplet markings, each consisting of three eighth notes.

es-moll

Two staves of musical notation for the es-moll key signature. The first staff contains a melodic line. The second staff continues the melody and includes three triplet markings, each consisting of three eighth notes.